

DESIGN

INNOVATION

RELOADED

SOCIETY

CULTURE

RUPTURE





SOCIETY

CULTURE

RUPTURE





RITUAL

THE

INTO

STEP

DESIGN

INNOVATION

RELOADED



SOCIETY

AN

ACT

CULTURE

IS

RUPTURE



1. Rupture Culture Society è un atto.
Una carica collettiva.

2. Una forza attraversa lo spazio e i corpi,
rispondendo al richiamo della materia.

4. Una luce che non illumina:
taglia, incide, attraversa.

3. La materia non è inerte.
Contiene una luce compressa.

5. La creazione nasce dall'attrito.
Tra superficie e presenza.

6. Corpo e materia sono lo stesso impulso.
Noi siamo la sua risonanza.

7. Il rito è collettivo. Monumentale.

8. E prende forma quando
la materia emerge.

9. Qui rinasce il co-branding
Diesel Living W/ Iris Ceramica.

EN 1. Rupture Culture Society is an act. A collective charge.

2. A force moves through space and bodies, answering the call of matter.

3. Matter is not inert. It holds a compressed light.

4. A light that does not illuminate: it cuts, carves, passes through.

5. Creation emerges from friction — between surface and presence.

6. Body and matter share the same impulse. We are its resonance.

7. The ritual is urban. Collective. Monumental.

8. And it takes form when matter emerges.

9. The Diesel Living W/ Iris Ceramica co-branding campaign is back.



DESIGN

INNOVATION

RELOADED

RITUAL

THE

INTO

STEP



COMEBACK

A

SOCIETY

MARKS

CULTURE

RUPTURE

1. Un rituale si nutre di ripetizioni.

2. Cadenze di un tempo che ritorna,
ogni volta unico, memorabile

4. Un'unione tra anime diverse,
ma intimamente sintonizzate.

3. Rupture Culture Society è il rito
collettivo che celebra un ritorno.

5. Al ritmo di un richiamo,
magnetico e potente.

6. Simbiosi di visioni coraggiose:
inedite e vive.

EN 1. A ritual thrives on repetition.

2. Cadences of time ever looping, each moment unique, memorable.
3. Rupture Culture Society is a collective ritual celebrating a comeback.
4. A union of souls — different yet deeply in tune.
5. To the rhythm of a quiet, magnetic call.
6. Forge of visions: bold, unseen, alive.





COLOR BLOCKS SELECTIONS

Questa gamma apre la strada a molteplici combinazioni cromatiche, tra armonie, contrasti e audaci eclettismi. Nelle pagine seguenti, i colori dialogano tra loro, suggerendo nuove prospettive di stile.

EN This range opens the way to multiple chromatic combinations, spanning harmonies, contrasts, and daring eclecticism. In the following pages, colors engage in dialogue, suggesting new style perspectives.

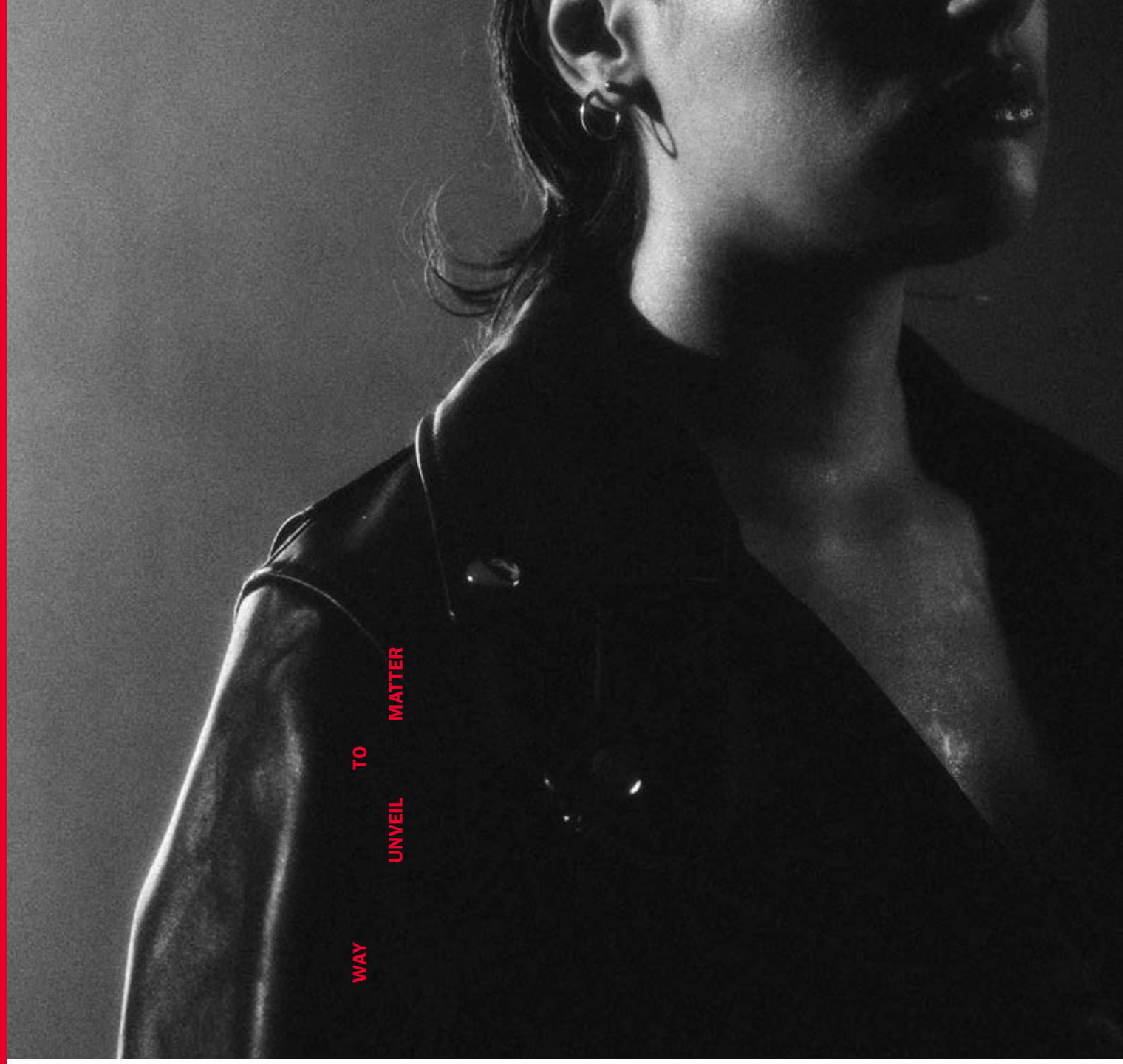
DIESEL LIVING W/ IRIS CERAMICA

Progettata sotto la direzione creativa di Glenn Martens in collaborazione con Controvento, Diesel Living e Iris Ceramica presentano una nuova collezione che unisce le loro competenze, celebrando l'artigianalità e la creatività giocosa, infuse con l'energia pop che contraddistingue Diesel Living. Materiali e tecniche si fondono armoniosamente per creare design audaci, originali e coinvolgenti.

EN Designed under the creative direction of Glenn Martens in collaboration with Controvento, Diesel Living and Iris Ceramica present a new collection that brings together their expertise - celebrating craftsmanship and playful creativity infused with Diesel Living's signature pop energy. Materials and techniques merge seamlessly to create bold, original, and immersive designs.

A NEW

WAY TO UNVEIL MATTER





GOLD W/ BRONZE

D-BEOLA

120x120 cm, 120x60 cm
8 mm, 20 mm
Natural Plus, Antislip

D-GIALLO SIENA

300x150 cm, 150x150 cm, 150x75 cm
75x75 cm, 120x120 cm, 120x60 cm
6 mm, 8mm
Polished, Natural

D-BIANCO NEVE

10x10 cm
10 mm
Glossy

D-GIALLO AMBRA

10x10 cm
10 mm
Glossy

ACID MAJOLICA PEARL

15x15 cm
10 mm
Glaze

ACID MAJOLICA BRONZE

15x15 cm
10 mm
Metal

DESIGN

INNOVATION

RELOADED

A DIALOGUE OF A
DETAILS,
LANGUAGE OF
WONDER





GOLD W/ BRONZE

300x150 cm, 150x150 cm, 150x75 cm, 120x 120 cm, 120x60 cm, 75x75 cm, 15x15 cm, 10x10 cm

Spessore 6 mm, 8 mm, 10 mm, 20 mm

120"x60", 60"x60", 60"x30", 48"x48", 48"x24", 30"x30", 6"x6", 4"x4"

Thickness 0,24", 0,31", 0,39", 0,79"

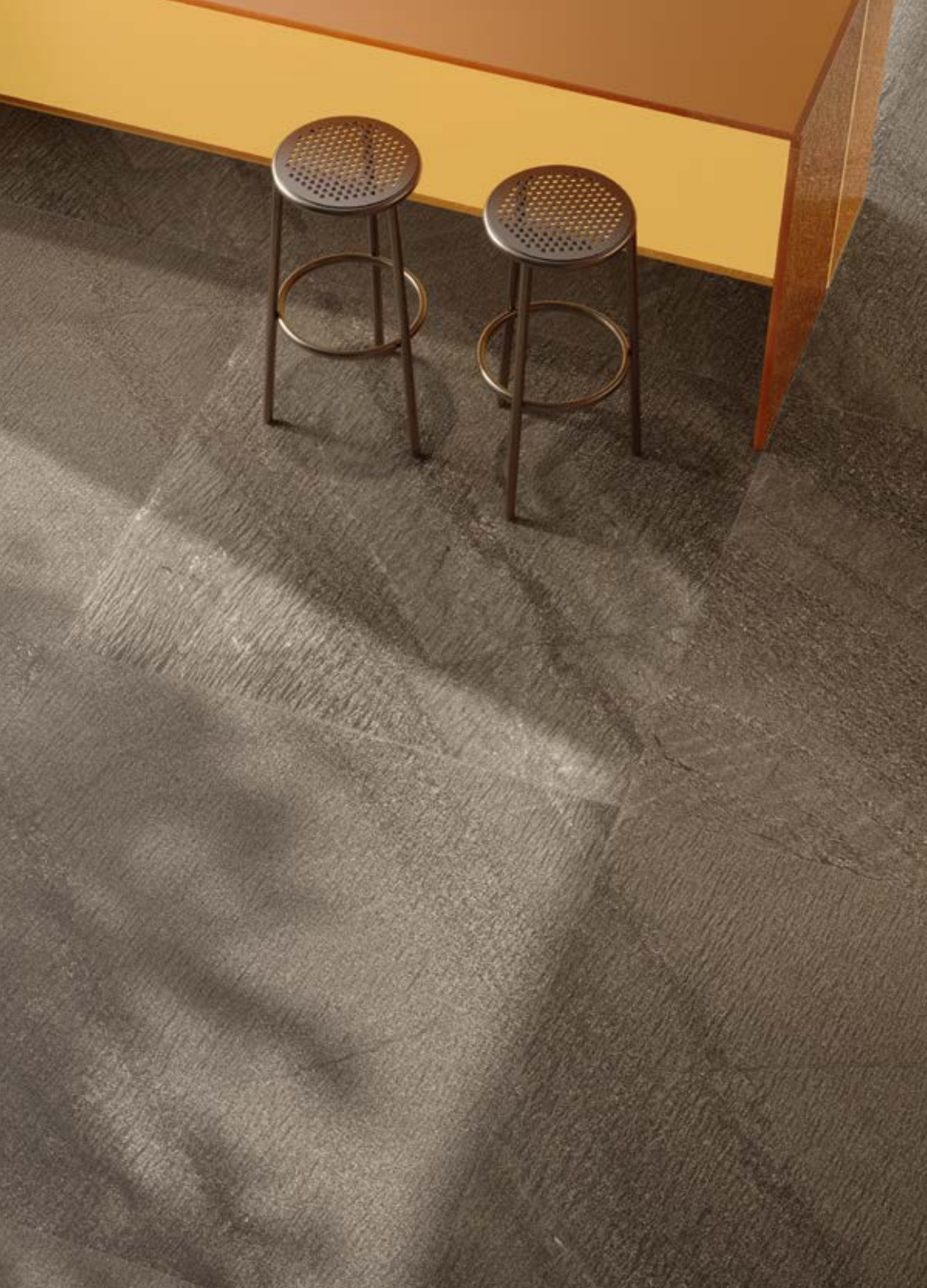
Grès porcellanato . Porcelain stoneware

(SEMIGRES) Rivestimenti . Wall surfaces

D-BEOLA	SIZE	CODE
Natural Plus 8 mm . 0,31"		
	120x120 cm . 48"x48"	1200061
	120x60 cm . 48"x24"	8920061
Antislip 8 mm . 0,31"		
	120x60 cm . 48"x24"	8920061AT
Antislip 20 mm . 0,79"		
	120x120 cm . 48"x48"	1200061ATS2
D-GIALLO SIENA	SIZE	CODE
Polished 6 mm . 0,24"		
	300x150 cm . 120"x60"	HL3150063
	150x150 cm . 60"x60"	HL1500063
	150x75 cm . 60"x30"	HL1750063
	75x75 cm . 30"x30"	HL750063
Natural 8 mm . 0,31"		
	120x120 cm . 48"x48"	1200063
	120x60 cm . 48"x24"	8920063
D-BIANCO NEVE	SIZE	CODE
Glossy 10 mm . 0,39"		
	10x10 cm . 4"x4"	710725
D-GIALLO AMBRA	SIZE	CODE
Glossy 10 mm . 0,39"		
	10x10 cm . 4"x4"	710724
ACID MAJOLICA PEARL	SIZE	CODE
Glaze 10 mm . 0,31"		
	15x15 cm . 6"x6"	511065
ACID MAJOLICA BRONZE	SIZE	CODE
Metal 10 mm . 0,31"		
	15x15 cm . 6"x6"	511067

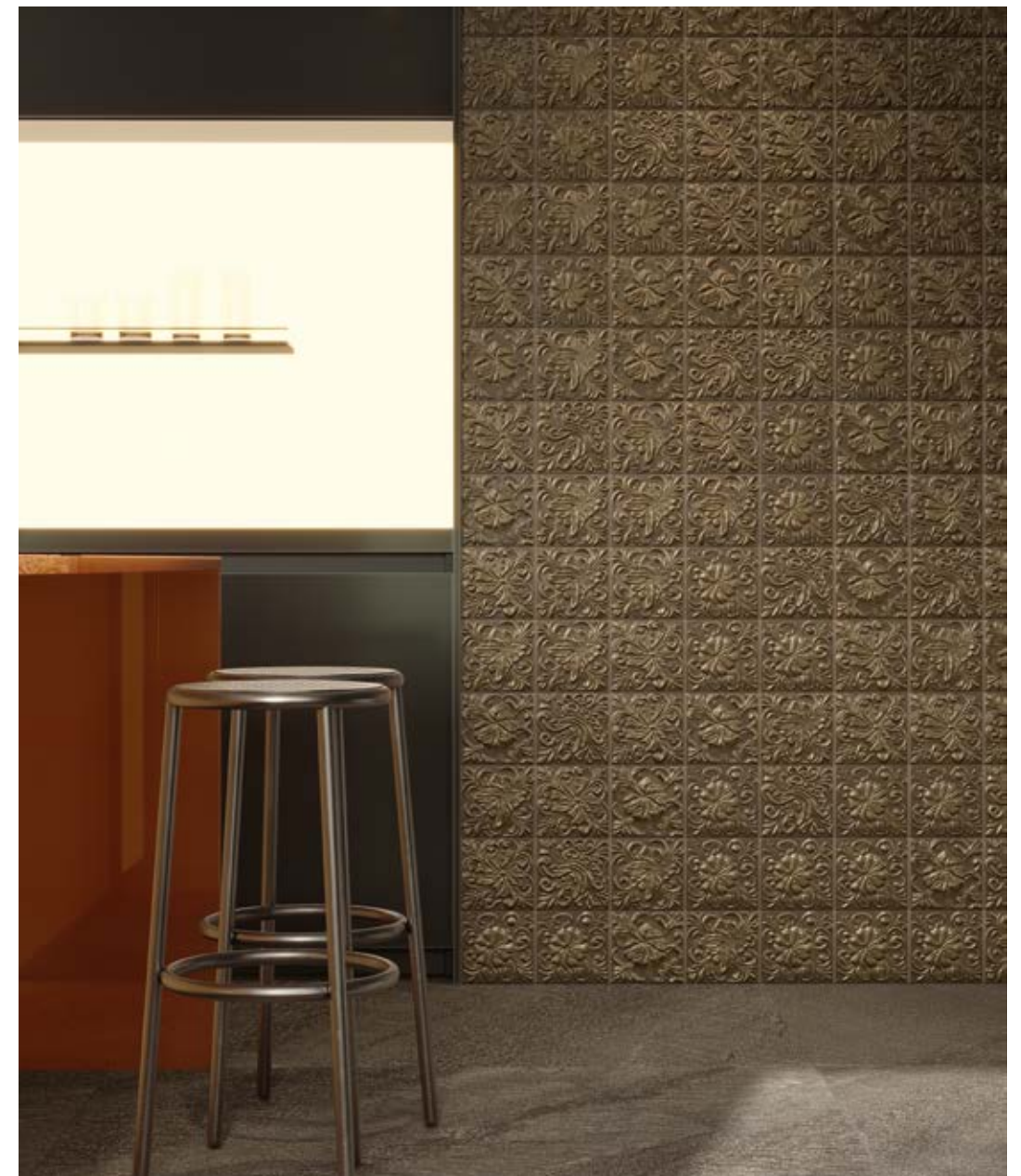
wall: D-Giallo Siena polished 300x150 cm . 120"x60" , Acid Majolica Bronze metal 15x15 cm . 6"x6"
floor: D-Beola natural plus 120x120 cm . 48"x48"





floor: D-Beola natural plus 120x120 cm . 48"x48"

wall: Acid Majolica Bronze metal 15x15 cm . 6"x6"
floor: D-Beola natural plus 120x120 cm . 48"x48"





BLACK W/ GREY

D-RAPOLANO PERLA

120x120 cm, 120x60 cm
8 mm, 20 mm
Natural, Antislip

D-TRAVERTINO OBSIDIAN

300x150 cm, 150x150 cm, 150x75 cm
75x75 cm, 120x120 cm, 120x60 cm
6 mm, 8mm, 20 mm
Natural Lux, Natural, Antislip

D-NERO VELLUTO

10x10 cm
10 mm
Glossy

D-BIANCO NEVE

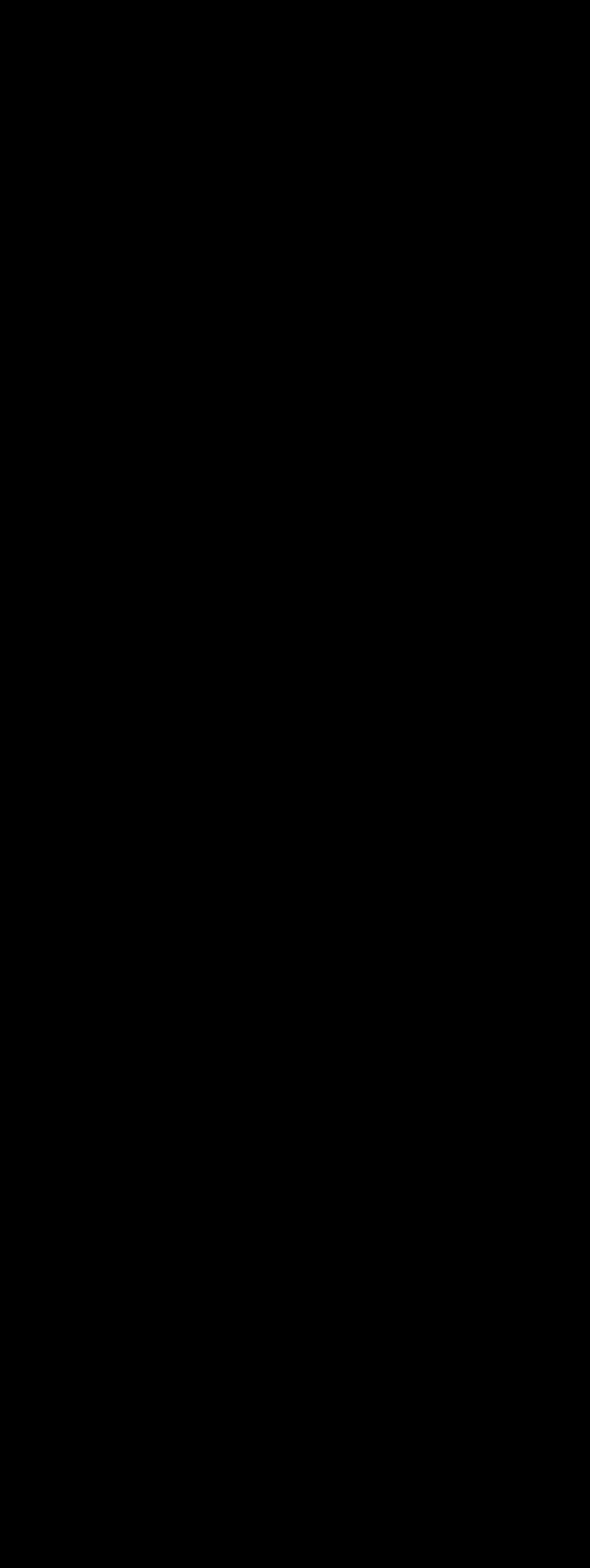
10x10 cm
10 mm
Glossy

D-ROSSO MAGMA

10x10 cm
10 mm
Glossy

ACID MAJOLICA PEARL

15x15 cm
10 mm
Glaze



DESIGN

INNOVATION

RELOADED

EARTH,
FIRE,
ICE,
LIGHT.
ALCHEMY

HARMONY
IS
ELEMENTAL



BLACK W/ GREY

300x150 cm, 150x150 cm, 150x75 cm, 120x 120 cm, 120x60 cm, 75x75 cm, 15x15 cm, 10x10 cm

Spessore 6 mm, 8 mm, 10 mm, 20 mm

120"x60", 60"x60", 60"x30", 48"x48", 48"x24", 30"x30", 6"x6", 4"x4"

Thickness 0,24", 0,31", 0,39", 0,79"

Grès porcellanato . Porcelain stoneware
(SEMIGRES) Rivestimenti . Wall surfaces

D-RAPOLANO PERLA	SIZE	CODE
Natural 8 mm . 0,31"		
	120x120 cm . 48"x48"	1200062
	120x60 cm . 48"x24"	8920062
Antislip 8 mm . 0,31"		
	120x60 cm . 48"x24"	8920062AT
Antislip 20 mm . 0,79"		
	120x120 cm . 48"x48"	1200062ATS2

D-TRAVERTINO OBSIDIAN	SIZE	CODE
Natural Lux 6 mm . 0,24"		
	300x150 cm . 120"x60"	HX3150064
	150x150 cm . 60"x60"	HX1500064
	150x75 cm . 60"x30"	HX1750064
	75x75 cm . 30"x30"	HX750064
Natural 8 mm . 0,31"		
	120x120 cm . 48"x48"	1200064
	120x60 cm . 48"x24"	8920064
Antislip 8 mm . 0,31"		
	120x60 cm . 48"x24"	8920064AT
Antislip 20 mm . 0,79"		
	120x120 cm . 48"x48"	1200064ATS2

D-NERO VELLUTO	SIZE	CODE
Glossy 10 mm . 0,39"		
	10x10 cm . 4"x4"	710727

D-BIANCO NEVE	SIZE	CODE
Glossy 10 mm . 0,39"		
	10x10 cm . 4"x4"	710725

D-ROSSO MAGMA	SIZE	CODE
Glossy 10 mm . 0,39"		
	10x10 cm . 4"x4"	710726

ACID MAJOLICA PEARL	SIZE	CODE
Glaze 10 mm . 0,39"		
	15x15 cm . 6"x6"	511065



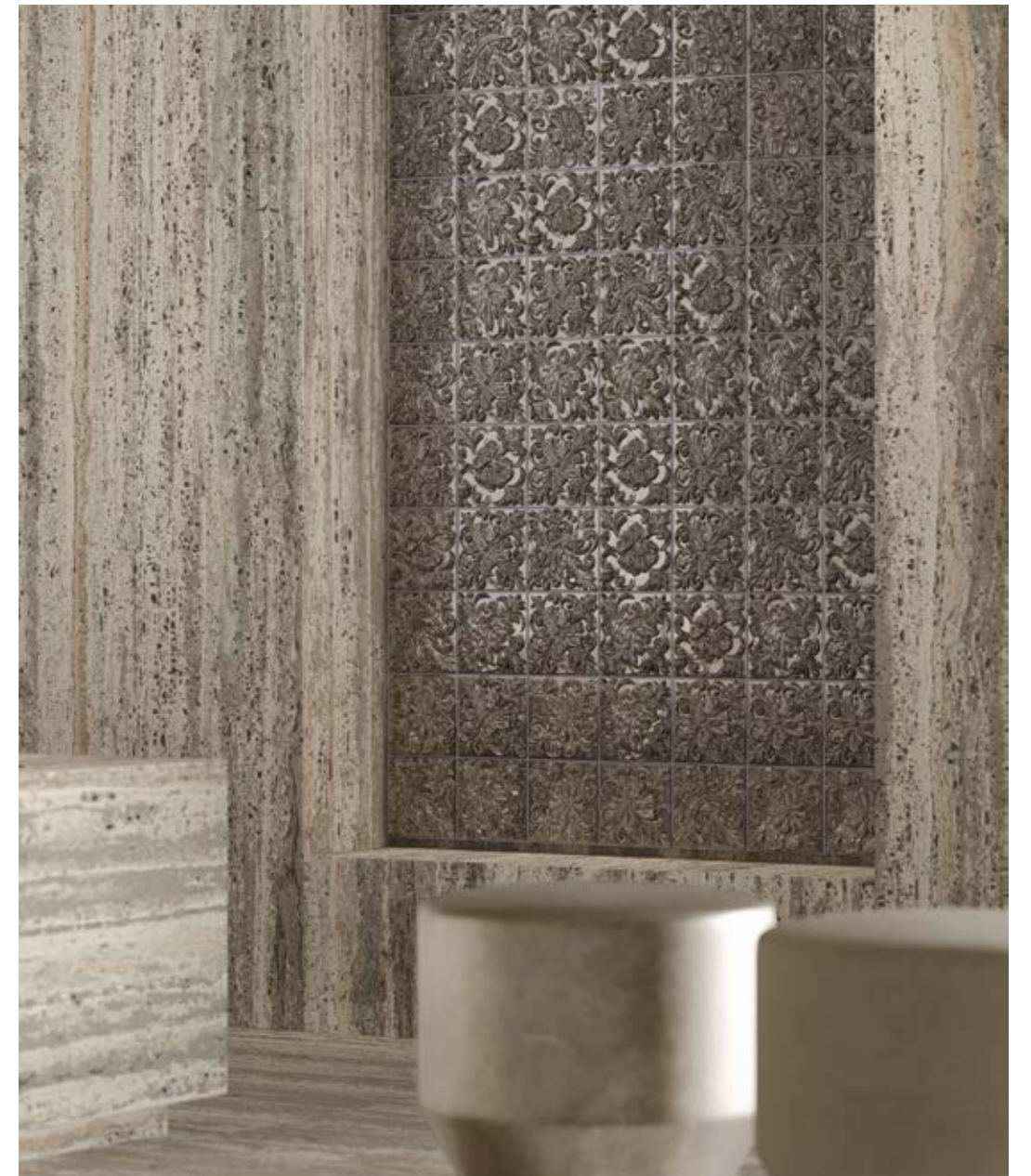
wall: D-Travertino Obsidian natural lux 300x150 cm . 120"x60" , Acid Majolica Silver metal 15x15 cm . 6"x6"
floor: D-Travertino Obsidian natural lux 300x150 cm . 120"x60"





floor: D-Travertino Obsidian natural lux 300x150 cm . 120"x60"

wall: D-Travertino Obsidian natural lux 300x150 cm . 120"x60" , Acid Majolica Silver metal 15x15 cm . 6"x6"
floor: D-Travertino Obsidian natural lux 300x150 cm . 120"x60"





MIX & MATCH

AGED CONCRETE GREY

270x120 cm
6 mm
Natural

DYS DISTRESSED RUG GREY

270x120 cm
6 mm

D-NERO VELLUTO

10x10 cm
10 mm
Glossy

D-BIANCO NEVE

10x10 cm
10 mm
Glossy

D-BORGOGNA

10x10 cm
10 mm
Glossy

ACID MAJOLICA SILVER

15x15 cm
10 mm
Metal

DESIGN

INNOVATION

RELOADED

SAME
OF
PRECIOUSNESS

CRAFT,
SENSE

DIFFERENT



MIX & MATCH

270x120 cm, 15x15 cm, 10x10 cm

Spessore 6 mm, 10 mm

106"x48", 6"x6", 4"x4"

Thickness 0,24", 0,39"

Ceramica Tecnica . Technical Ceramics
(SEMIGRES) Rivestimenti . Wall surfaces

AGED CONCRETE GREY	SIZE	CODE
Natural 6 mm . 0,24"	270x120 cm . 106"x48"	HI2712046XL

DYS DISTRESSED RUG GREY	SIZE	CODE
DYS 6 mm . 0,24"	270x120 cm . 106"x48"	H27120070DYS

D-NERO VELLUTO	SIZE	CODE
Glossy 10 mm . 0,39"	10x10 cm . 4"x4"	710727

D-BIANCO NEVE	SIZE	CODE
Glossy 10 mm . 0,39"	10x10 cm . 4"x4"	710725

D-BORGOGNA	SIZE	CODE
Glossy 10 mm . 0,39"	10x10 cm . 4"x4"	710728

ACID MAJOLICA SILVER	SIZE	CODE
Metal 10 mm . 0,39"	15x15 cm . 6"x6"	511066

wall: Acid Majolica Silver metal 15x15 cm · 6"x6" , Aged Concrete Grey natural 270x120 cm · 106"x48"
floor: DYS Distressed Rug Grey 270x120 cm · 106"x48" , Aged Concrete Grey natural 270x120 cm · 106"x48"





wall: Acid Majolica Silver metal 15x15 cm . 6"x6"

wall: Acid Majolica Silver metal 15x15 cm . 6"x6", Aged Concrete Grey natural 270x120 cm . 106"x48"
floor: DYS Distressed Rug Grey 270x120 cm . 106"x48", Aged Concrete Grey natural 270x120 cm . 106"x48"





TECH & SPECS



D-BEOLA

120x120 cm, 120x60 cm . Spessore 8 mm | 48"x48", 48"x24" . Thickness 0,31"

120x120 cm . Spessore 20 mm | 48"x48" . Thickness 0,79"

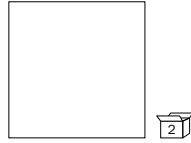
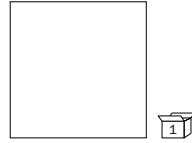
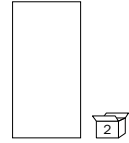
Grès porcellanato . Porcelain stoneware




D-BEOLA



GAMMA

	 120x120 cm 48"x48" 8 mm . 0,31"	 120x120 cm 48"x48" 20 mm . 0,79"	 120x60 cm 48"x24" 8 mm . 0,31"
D-BEOLA Natural Plus	1200061		8920061
D-BEOLA Antislip		1200061ATS2	8920061AT

IMBALLAGGIO . PACKING

SIZE	THICKNESS	KG/MQ	BOX		EUROPALLET	
			 mq	box	box	mq
120x120 . 48"x48"	8 mm . 0,31"	18,40	2	2,88	14	40,32
120x60 . 48"x24"	8 mm . 0,31"	18,40	2	1,44	30	43,20
120x120 . 48"x48"	20 mm . 0,31"	45,03	1	1,44	16	23,04

D-RAPOLANO PERLA

120x120 cm, 120x60 cm . Spessore 8 mm | 48"x48", 48"x24" . Thickness 0,31"

120x120 cm . Spessore 20 mm | 48"x48" . Thickness 0,79"


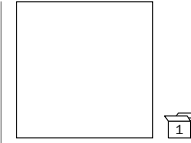
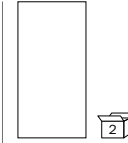
Grès porcellanato . Porcelain stoneware




D-RAPOLANO PERLA



GAMMA

	 120x120 cm 48"x48" 8 mm . 0,31"	 120x120 cm 48"x48" 20 mm . 0,79"	 120x60 cm 48"x24" 8 mm . 0,31"
D-RAPOLANO PERLA Natural	1200062		8920062
D-RAPOLANO PERLA Antislip		1200062ATS2	8920062AT

IMBALLAGGIO . PACKING

SIZE	THICKNESS	KG/MQ	BOX		EUROPALLET	
			 mq	box	box	mq
120x120 . 48"x48"	8 mm . 0,31"	18,40	2	2,88	14	40,32
120x60 . 48"x24"	8 mm . 0,31"	18,40	2	1,44	30	43,20
120x120 . 48"x48"	20 mm . 0,31"	45,03	1	1,44	16	23,04

D-GIALLO SIENA

300x150 cm, 150x150 cm, 150x75 cm, 75x75 cm . Spessore 6 mm | 120"x60", 60"x60", 60"x30", 30"x30" . Thickness 0,24"

120x120 cm, 120x60 cm . Spessore 8 mm | 48"x48", 48"x24" . Thickness 0,31"

Ceramica Tecnica, Grès porcellanato . Technical Ceramics, Porcelain stoneware



D-GIALLO SIENA



GAMMA	300x150 cm 120"x60" 6 mm . 0,24"	150x150 cm 60"x60" 6 mm . 0,24"	150x75 cm 60"x30" 6 mm . 0,24"	75x75 cm 30"x30" 6 mm . 0,24"
D-GIALLO SIENA Polished	HL3150063	HL1500063	HL1750063	HL750063

GAMMA	120x120 cm 48"x48" 8 mm . 0,31"	120x60 cm 48"x24" 8 mm . 0,31"
D-GIALLO SIENA Natural	1200063	8920063

IMBALLAGGIO . PACKING

SIZE	THICKNESS	KG/MQ	BOX		EUROPALLET	
			mq	box	box	mq
300x150 . 120"x60"	6 mm . 0,24"	14,07	1	4,50	12	54,00
150x150 . 60"x60"	6 mm . 0,24"	14,07	1	2,25	24	54,00
150x75 . 60"x30"	6 mm . 0,24"	14,07	2	2,25	26	58,50
75x75 . 30"x30"	6 mm . 0,24"	14,07	3	1,69	38	64,14
120x120 . 48"x48"	8 mm . 0,31"	18,40	2	2,88	14	40,32
120x60 . 48"x24"	8 mm . 0,31"	18,40	2	1,44	30	43,20

D-TRAVERTINO OBSIDIAN

300x150 cm, 150x150 cm, 150x75 cm, 75x75 cm . Spessore 6 mm | 120"x60", 60"x60", 60"x30", 30"x30" . Thickness 0,24"

120x120 cm, 120x60 cm . Spessore 8 mm | 48"x48", 48"x24" . Thickness 0,31"

120x120 cm . Spessore 20 mm | 48"x48" . Thickness 0,79"

Ceramica Tecnica, Grès porcellanato . Technical Ceramics, Porcelain stoneware

D-TRAVERTINO OBSIDIAN



GAMMA	300x150 cm 120"x60" 6 mm . 0,24"	150x150 cm 60"x60" 6 mm . 0,24"	150x75 cm 60"x30" 6 mm . 0,24"	75x75 cm 30"x30" 6 mm . 0,24"
D-TRAVERTINO OBSIDIAN Natural Lux	HX3150064	HX1500064	HX1750064	HX750064

GAMMA	120x120 cm 48"x48" 8 mm . 0,31"	120x120 cm 48"x48" 20 mm . 0,79"	120x60 cm 48"x24" 8 mm . 0,31"
D-TRAVERTINO OBSIDIAN Natural	1200064		8920064
D-TRAVERTINO OBSIDIAN Antislip		1200064ATS2	8920064AT

IMBALLAGGIO . PACKING

SIZE	THICKNESS	KG/MQ	BOX		EUROPALLET	
			pz	mq	box	mq
300x150 . 120"x60"	6 mm . 0,24"	14,07	1	4,50	12	54,00
150x150 . 60"x60"	6 mm . 0,24"	14,07	1	2,25	24	54,00
150x75 . 60"x30"	6 mm . 0,24"	14,07	2	2,25	26	58,50
75x75 . 30"x30"	6 mm . 0,24"	14,07	3	1,69	38	64,14
120x120 . 48"x48"	8 mm . 0,31"	18,40	2	2,88	14	40,32
120x60 . 48"x24"	8 mm . 0,31"	18,40	2	1,44	30	43,20
120x120 . 48"x48"	20 mm . 0,31"	45,03	1	1,44	16	23,04

DYS DISTRESSED RUG

270x120 cm . Spessore 6 mm | 106"x48" . Thickness 0,24"

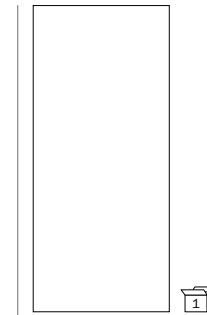


Ceramica Tecnica . Technical Ceramics

DYS DISTRESSED RUG BROWN



DYS DISTRESSED RUG GREY



270x120 cm
106"x48"
6 mm . 0,24"

GAMMA

DYS DISTRESSED RUG BROWN	H27120071DYS
DYS DISTRESSED RUG GREY	H27120070DYS

DISTRESSED RUG trae ispirazione dai tappeti antichi, reinterpretando elementi decorativi classici radicati nella tradizione persiana. Cultura e tempo sono incisi sulla superficie come nella pietra, creando uno spazio al contempo distintivo e sereno, esaltato dalle sue tonalità naturali. Con il passare del tempo, le superfici si consumano e frammenti vengono rimossi, rendendo il cambiamento stesso parte integrante del design.

DISTRESSED RUG is inspired by antique carpets, reinterpreting classical decorative elements rooted in Persian tradition. Culture and time are etched into the surface like stone, creating a space that is both distinctive and serene, enhanced by its natural tones. As time wears surfaces away, fragments are removed along the way, making change itself an integral part of the design.

Sotto la direzione creativa di Glenn Martens in collaborazione con Controvento.
Under the creative direction of Glenn Martens in collaboration with Controvento.

IMBALLAGGIO . PACKING

SIZE	THICKNESS	KG/MQ	BOX	EUROPALLET		
				mq	box	mq
270x120 . 106"x48"	6 mm . 0,24"	14,07	1	3,24	16	51,84

ACID MAJOLICA

15x15 cm . Spessore 10 mm | 6"x6" . Thickness 0,39"



(SEMIGRES) Rivestimenti . Wall surfaces

PEARL



BRONZE




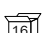
SILVER



Sotto la direzione creativa di Glenn Martens in collaborazione con Controvento.
Under the creative direction of Glenn Martens in collaboration with Controvento.

GAMMA



ACID MAJOLICA BRONZE Metal	511067
ACID MAJOLICA PEARL Glaze	511065
ACID MAJOLICA SILVER Metal	511066

 
15x15 cm
6"x6"
10 mm . 0,39"

ACID MAJOLICA è un prodotto decorativo elegante e versatile, disponibile in una vasta gamma di colori. Ispirata alla tradizionale maiolica portoghese, viene reinterpretata con il tocco distintivo di Diesel. Il motivo è volutamente distorto – “in stile acid house” – per un effetto audace e contemporaneo.

ACID MAJOLICA is an elegant, versatile decorative tile available in a range of colors. Inspired by traditional Portuguese majolica, it is reinterpreted with Diesel's distinctive edge. The pattern is deliberately distorted - “on acid” - for a bold, contemporary effect.

IMBALLAGGIO . PACKING

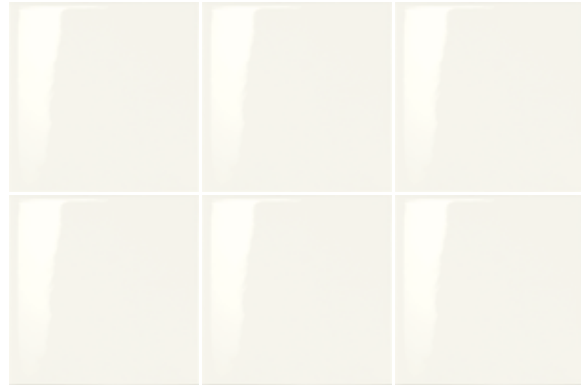
SIZE	THICKNESS	KG/MQ	BOX	EUROPALLET		
				mq	box	mq
15x15 . 6"x6"	10 mm . 0,39"	16,41	16	0,36	48	17,28

10x10

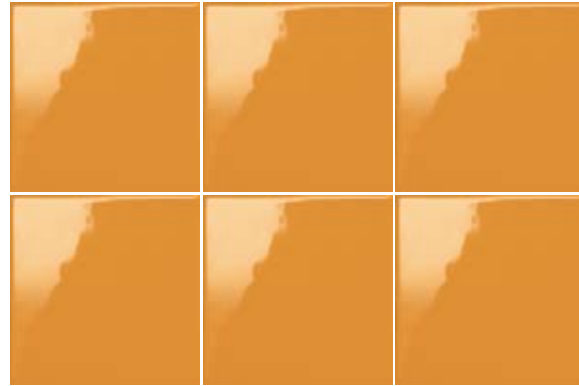
10x10 cm . Spessore 10 mm | 4"x4" . Thickness 0,39"

(SEMIGRES) Rivestimenti . Wall surfaces

D-BIANCO NEVE



D-GIALLO AMBRA

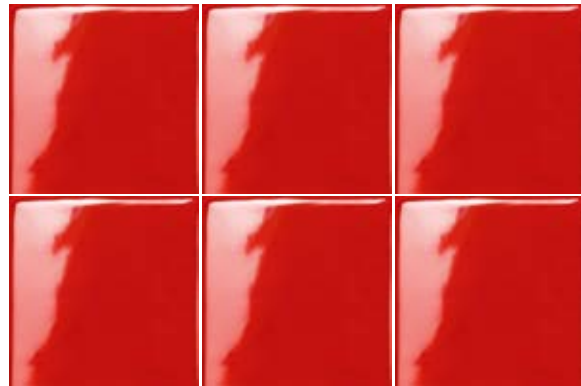


GAMMA

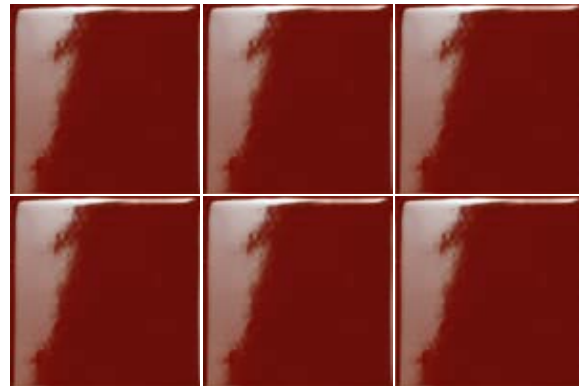
10x10 cm
4"x4"
10 mm . 0,39"

D-BORGOGNA Glossy	710728
D-BIANCO NEVE Glossy	710725
D-GIALLO AMBRA Glossy	710724
D-NERO VELLUTO Glossy	710727
D-ROSSO MAGMA Glossy	710726

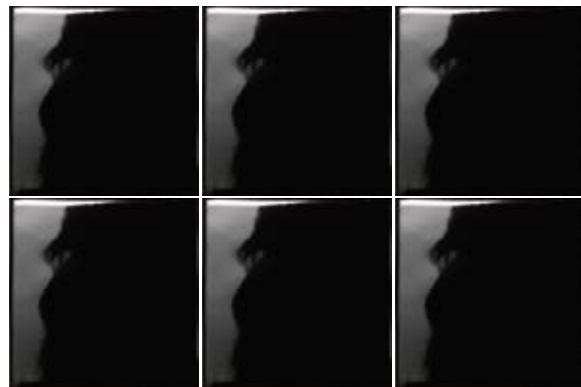
D-ROSSO MAGMA



D-BORGOGNA



D-NERO VELLUTO



IMBALLAGGIO . PACKING

SIZE	THICKNESS	KG/MQ	BOX		EUROPALLET	
			mq	box	mq	mq
10x10 . 4"x4"	10 mm . 0,39"	19,20	50	0,50	90	45,00

AGED CONCRETE

270x120 cm . Spessore 6 mm | 106"x48" . Thickness 0,24"

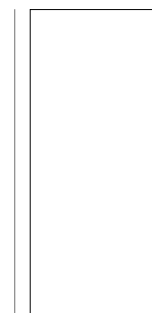


Ceramica Tecnica . Technical Ceramics

AGED CONCRETE GREY



AGED CONCRETE SAND




270x120 cm
106"x48"
6 mm . 0,24"

GAMMA

AGED CONCRETE GREY Natural	HI2712046XL
AGED CONCRETE SAND Natural	HI2712047XL

IMBALLAGGIO . PACKING

SIZE	THICKNESS	KG/MQ	BOX		EUROPALLET	
			 mq	box	mq	mq
270x120 . 106"x48"	6 mm . 0,24"	14,07	1	3,24	16	51,84

HOILY MARBLE

120x120 cm . Spessore 8 mm | 48"x48" . Thickness 0,31"

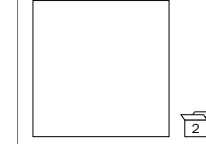
Grès porcellanato . Porcelain stoneware



HOILY GREY



HOILY BLACK



120x120 cm
48"x48"
8 mm . 0,31"

GAMMA

HOILY BLACK Natural Plus	120860
HOILY GREY Natural Plus	120861

IMBALLAGGIO . PACKING

SIZE	THICKNESS	KG/MQ	BOX	EUROPALLET		
				mq	box	mq
120x120 . 48"x48"	8 mm . 0,31"	19,00	2	2,88	14	40,32

STAGE

120x60 cm, 60x60 cm, 60x30 cm . Spessore 9 mm | 48"x24", 24"x24", 24"x12" . Thickness 0,35"



Grès porcellanato . Porcelain stoneware

STAGE DIVING METALLIC GREY




STAGE BOSS METALLIC GREY

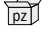


GAMMA	120x60 cm 48"x24" 9 mm . 0,35"	60x60 cm 24"x24" 9 mm . 0,35"	60x30 cm 24"x12" 9 mm . 0,35"
	STAGE DIVING METALLIC GREY	892287	866287
STAGE BOSS METALLIC GREY	892290	866290	863290

PEZZI SPECIALI . TRIMS

 GRADINO ELLE JOLLY 60x30 cm - 24"x12"	Gradino Elle Jolly Diving Metallic Grey	867950
 BATTISCOPA 9x60 cm - 3,54"x24"	Battiscopa Diving Metallic Grey	862287

IMBALLAGGIO . PACKING

SIZE	THICKNESS	KG/MQ	BOX		EUROPALLET	
			 pz	mq	box	mq
120x60 . 48"x24"	9 mm . 0,35"	19,75	2	1,44	30	43,20
60x60 . 24"x24"	9 mm . 0,35"	19,75	3	1,08	40	43,2
60x30 . 24"x12"	9 mm . 0,35"	20,32	6	1,08	40	43,20
60x30 . 24"x12" Gradino Elle Jolly	9 mm . 0,35"	3,4 pz	4	0,72		
9x60 . 3,54"x24" Battiscopa	9 mm . 0,35"	1,31 pz	10	0,54		



CARATTERISTICHE TECNICHE

TECHNICAL CHARACTERISTICS



Inquadra il QR Code per le specifiche tecniche dettagliate . Scan the QR Code for detailed technical specifications

Creative Direction & Photography

Omiadvert

April 2026
LCG376

Iris Ceramica si riserva la facoltà di modificare in qualunque momento le informazioni e le caratteristiche illustrate in questo catalogo, che non sono comunque da ritenere legalmente vincolanti. I colori e le caratteristiche estetiche dei prodotti sono quanto più possibile vicini a quelli reali, nei limiti consentiti dai processi di stampa.

Iris Ceramica reserves the right to modify the information and the characteristics illustrated in this catalogue (which are in any case not legally binding) at any moment. The colours and appearance features of the products are as close as possible to reality, within the limitation of the printing process.

Iris Ceramica se réserve la faculté de modifier à tout moments les informations et les caractéristiques figurant dans le présent catalogue, lesquelles n'engagent pas par le fabricant au plan légal. Les couleurs et les caractéristiques esthétiques sont fidèles aux couleurs et caractéristiques réelles dans les limites des procédés d'impression.

Die Firma Iris Ceramica behält sich vor, die in diesem Katalog enthaltenen Informationen und Eigenschaften jederzeit zu ändern; sie gelten auf keinen Fall als gesetzlich bindend. Die Farben und ästhetischen Eigenschaften der Produkte kommen innerhalb der Möglichkeiten der Druckverfahren den tatsächlichen Eigenschaften so weit wie möglich nahe.

Iris Ceramica se reserva el derecho de modificar en cualquier momento la información y las características recogidas en este catálogo, que no deben considerarse jurídicamente vinculantes. Los colores y las características estéticas de los productos se asemejan a los reales en la medida en que lo permiten los límites impuestos por los procesos de impresión.

Компания Iris Ceramica сохраняет за собой право изменения информации и характеристик, указанных в данном каталоге, в любой момент без предварительного уведомления. Информация, характеристики и иллюстрации в каталоге не являются обязывающими. Цвета и эстетические характеристики продукции максимально приближены к реальным, насколько это позволяют сделать нынешние печатные технологии.

Iris Ceramica 保留随时修改本目录文字与图片信息的权利，并无需为此承担法律责任。在印刷工艺允许的范围內，产品颜色与外观特性尽可能与现实相符。

Iris Ceramica: tutti i diritti riservati. Ogni riproduzione totale o parziale dei contenuti di questo catalogo, sia di testo sia di immagine, è vietata e sarà perseguita a termini di legge.

Iris Ceramica: all rights reserved. Total or partial reproduction of text or illustrations of this catalogue is prohibited and is subject to legal sanctions.

Iris Ceramica: tous droits réservés. Toute reproduction totale ou partielle du contenu - textes et images - du présent catalogue est interdite et constituerait une contrefaçon sanctionnée par la loi.

Iris Ceramica: alle Rechte vorbehalten. Der vollständige oder auszugsweise Nachdruck des Inhalts dieses Katalog in Schrift und Bild is verboten und wird nach Maßgabe des Gesetzes geahndet.

Iris Ceramica. Todos los derechos reservados. Queda prohibida la reproducción total o parcial de los contenidos de este catálogo, ya se trate del texto o de las imágenes. Cualquier infracción será sancionada por ley.

Iris Ceramica: все права защищены. Полное или частичное воспроизведение текста и иллюстраций, приведенных в каталоге, не допускается и преследуется по закону.


Iris Ceramica: 保留所有权利。抄表或复制本目录全部或部分文字与图片属违法行为，如若违反将追究法律责任。

IRIS CERAMICA

Via Ghiarola Nuova, 119
41042 Fiorano Modenese (MO) - Italy
Telefono +39 0536 862.111
info@irisceramica.com
irisceramica.com

GranitiFiandre SpA

Via Radici Nord, 112 - 42014 Castellarano (RE) Italy

A BRAND OF  **IRIS
CERAMICA
GROUP**



